



# CAMDEN LOCKS

**LONDON, UK**

ARCHITECT: ALLFORD HALL MONAGHAN MORRIS

CONTRACTOR: MACE

## ABOUT THE PROJECT

The Camden Lock Village development has been carried out to rejuvenate the area, housing a new canal side market, a food quarter, commercial space, housing and pedestrian routes. To improve the pedestrian routes, many new footbridges were to be installed. For this expansion joints were needed to be used to allow for the daily movement foot traffic.

## SPECIFIC CHALLENGES

The bridges were designed to be allow for mass foot traffic each day. For this the a joint with substantial movement and loading capabilities needed to be selected to give the correct support over large spans. The selected joints were to be fixed into the steel and also provide a slip resistance surface.



## DESIGN DELIVERED

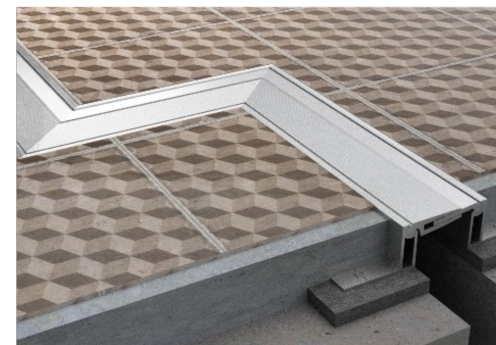
The 300 Series was chosen as the joint of choice due to its versatility with fixing details, load capacity and movement allowance which made it the perfect candidate for the expansion gaps on site. The 300 series also met the strict slip resistant criteria set out by the customer so that the general public could transit the joint worry free.

## PRODUCTS USED

Megatec 300



Miter Sections



Made in United Kingdom | T: +44 (0) 20 8194 5999 | E: [info@vexcolt.com](mailto:info@vexcolt.com) | W: [www.vexcolt.com](http://www.vexcolt.com)