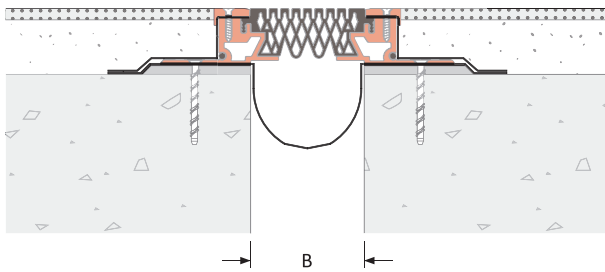
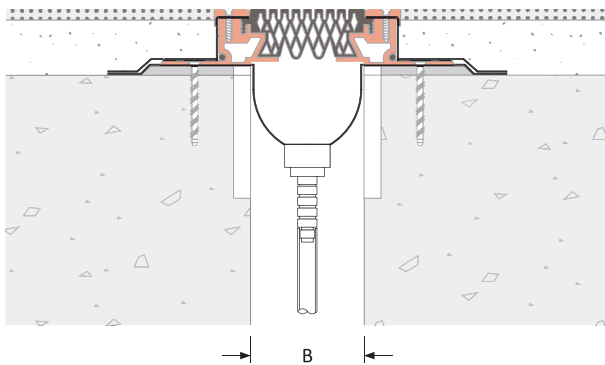


AquAtec 1500 : A01-A02

AquAtec 1500 : A01



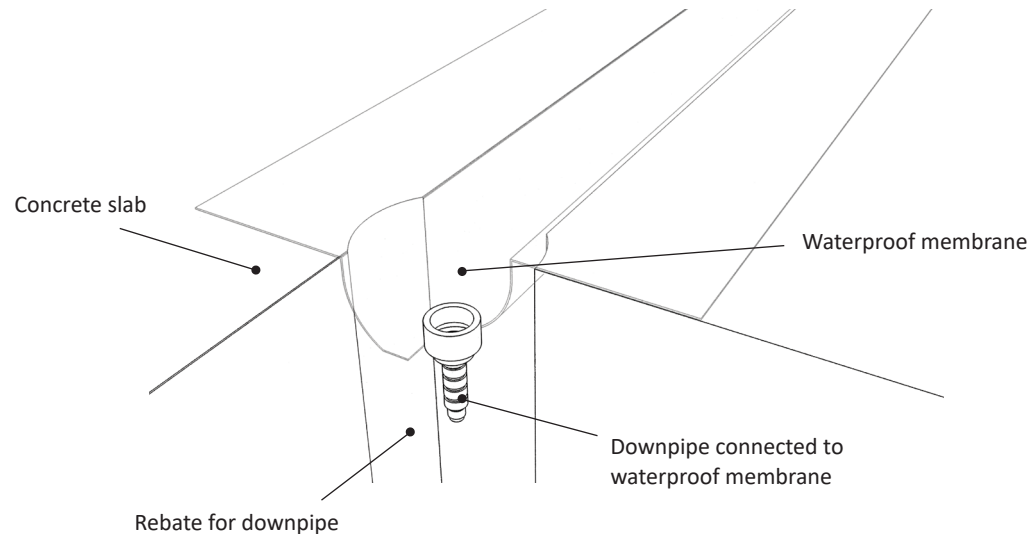
AquAtec 1500 : A02



Expansion Joint Selection Criteria

Product Details

Joint Location	Gap Width B (mm)	Movement Capacity (mm)		Watertight rating	Dielectric rating	Product Dimensions				Product Number
		±	[Total]			Thickness (mm)	Material Widths (mm)	Sightline A (mm)	Blockout C (mm)	
Floor - Floor Wall - Wall	25 - 500	50% Gap	100% Gap	EN1928(B)	2Kv	1.14	200	-	-	1500-A01-200
							300			1500-A01-300
							500			1500-A01-500
							800			1500-A01-800
							1000			1500-A01-1000
Floor - Wall Corner - Wall	25 - 500	50% Gap	100% Gap	EN1928(B)	2Kv	1.14	200	-	-	1500-A02-200
							300			1500-A02-300
							500			1500-A02-500
							800			1500-A02-800
							1000			1500-A02-1000



Features

Movement

Easy to install
 High movement capacity +/- 250mm

Material

1.14mm thick EPDM waterproofing membrane bonded to the substrate and cross-linked to membranes bonded to the side and foot plates of the joint encapsulating the expansion joint

External and Internal Locations

Floor to Floor
 Floor to Wall
 Wall to Wall
 Corner Wall
 Roof to Roof
 Roof to Wall
 Parapet Walls

Traffic Frequency per day

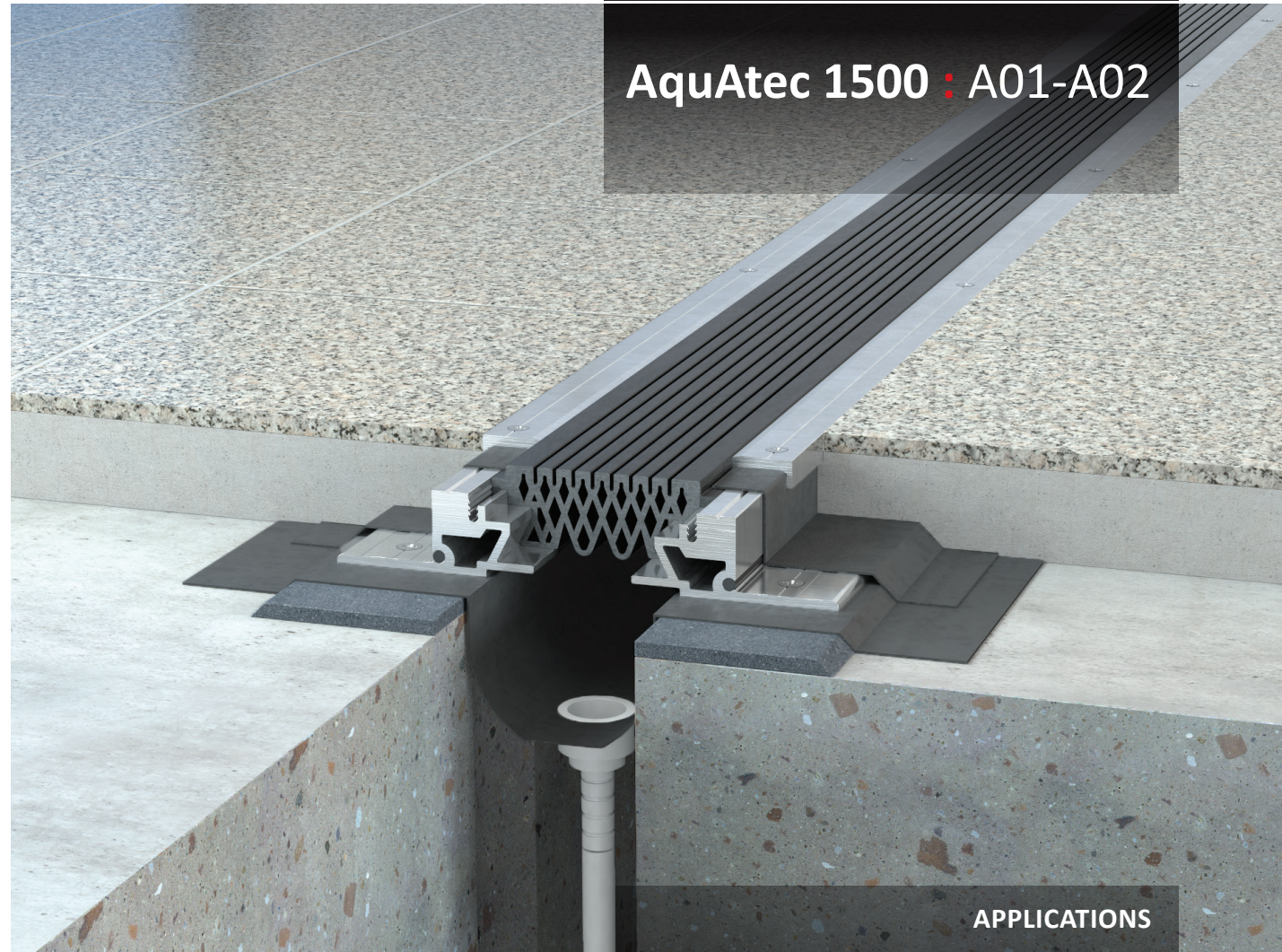


- - - - -

System Options

Gap width(s)	25-500 mm
Material width(s)	200, 300, 500, 800, 1000mm
Material thickness	1.14mm
Colour(s)	Black
Drainage	Down pipe option
Pre-assembly in factory	Contact Vexcolt

AquAtec 1500 : A01-A02



APPLICATIONS

Airport Terminals | Educational | Exhibition Centres
 Department Stores | Distribution & Retail Warehouses
 Factories | Hospitals | Museums | Offices & Hotels
 Parking | Places of Worship | Residential Buildings
 Rail, Metros & Elevated Rail Stations | Roads & Bridges
 Shopping Centres | Sports Stadiums | Supermarkets