

Heavy Duty Expansion Joint Systems

REACT 1100/1200/1300

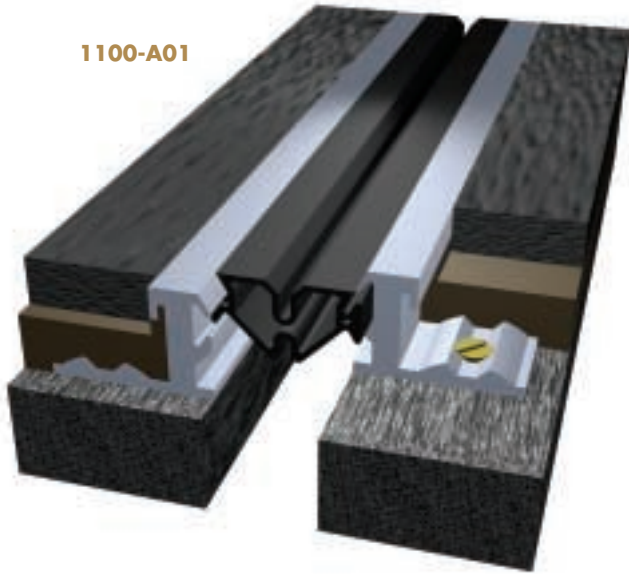


React 1100/1120 Series

For Podiums and Parking Decks

Joint Widths 25mm to 75mm

1100-A01



- Available in aluminium with Santoprene core
- UV, acid and alkali resistant
- For gaps in floors up to 75mm wide with +/- 38mm movement
- Santoprene core may be heat-welded to form water tight transitions
- Standard colour is black
- Ideal for use in parking decks, pavements, podiums and service areas

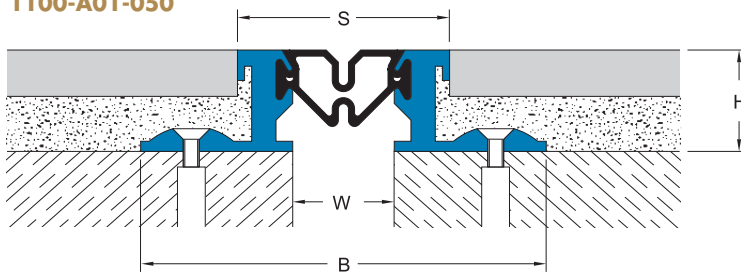
OPTIONS

Fire Rated

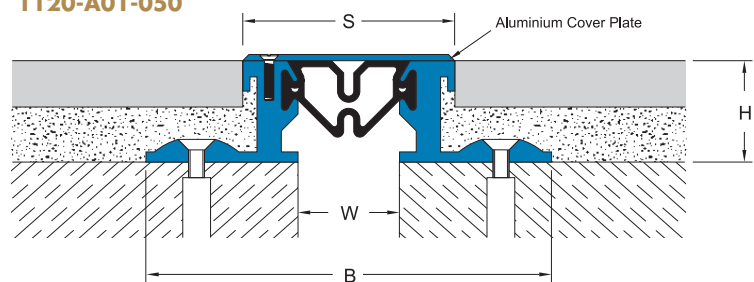
Cover plate where joint is used in pedestrian areas

Separate product and installation datasheet available

1100-A01-050



1120-A01-050

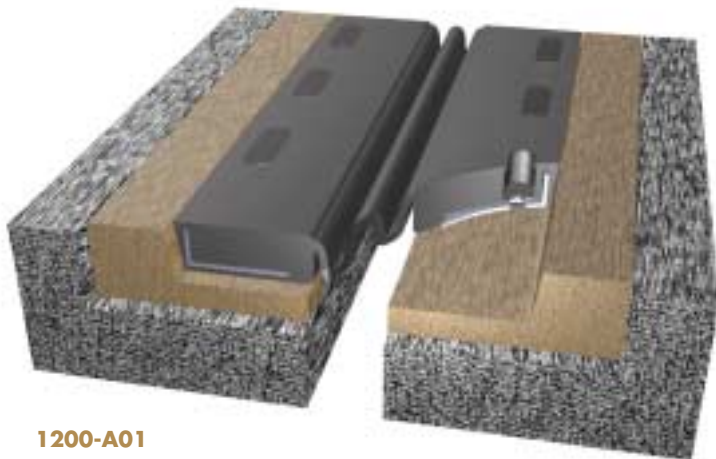


Application	Style	W Width mm	H Height mm	S Sightline mm	B Blockout mm	Movement ±		Load Rating kN
						Horizontal mm	Vertical mm	
Deck/Deck	1100-A01-025	25	50	75	175	13	6	300
	1100-A01-050	50	50	100	200	25	13	120
	1100-A01-075	75	50	125	225	38	19	90
Deck/Deck	1120-A01-025	25	50	75	175	6	3	300
	1120-A01-050	50	50	100	200	13	6	120
	1120-A01-075	75	50	125	225	19	10	90

React 1200 Series

Heavy Duty Systems for Parking, Bridge Decks and Service Areas

Joint Widths 25mm to 40mm



1200-A01

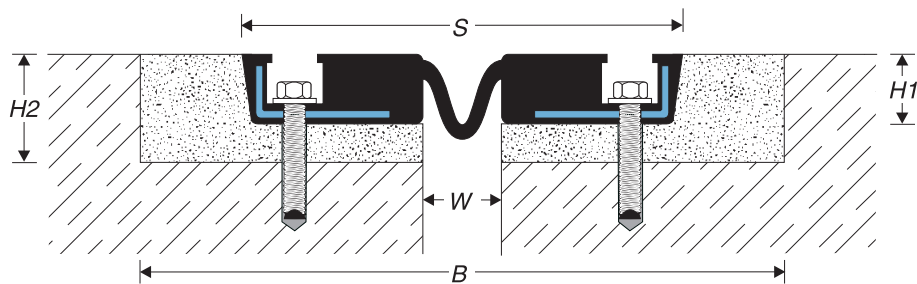
- Moulded Neoprene, steel reinforced joint
- Installed using anchor bolts affixed in bolt pockets and through steel angles
- UV, acid and alkali resistant
- For gaps in floors up to 40mm wide with +/- 35mm movement
- Joint modules interlock with added sealant to ensure a water-tight joint
- Smooth transit for wheeled vehicles
- Standard colour is black
- Heavy-duty moulded joint ideal for use in parking decks and service areas

OPTIONS

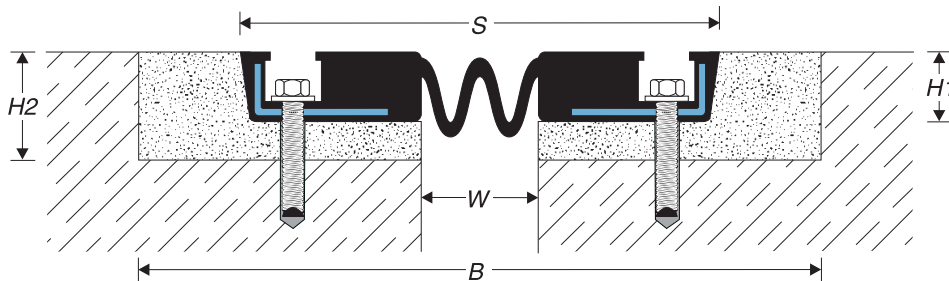
Fire Rated

Separate product and installation datasheet available

1200-A01-040



1200-A01-060



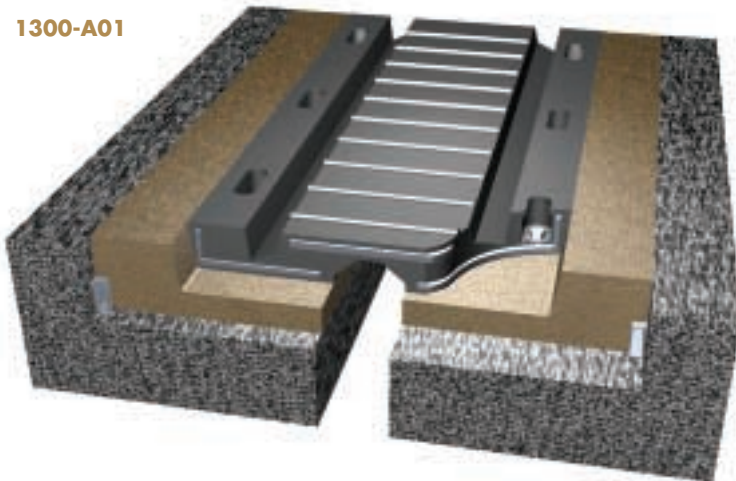
Application	Style	W Width mm	H1 Height mm	H2 Height mm	S Sightline mm	B Blockout mm	Movement ±		Load Rating kN
							Horizontal mm	Vertical mm	
Deck/Deck	1200-A01-025	25	34	55	209	300	20	2.5	600
	1200-A01-040	40	35	55	220	300	35	2.5	600

React 1300 Series

Heavy Duty Systems for Parking and Bridge Decks

Joint Widths 25mm to 200mm

1300-A01



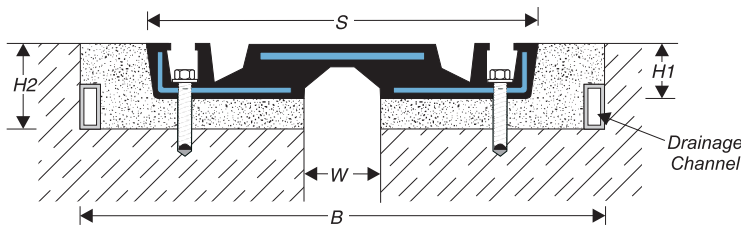
- Moulded Neoprene, steel reinforced joint for very heavy duty applications
- Installed using anchor bolts affixed in bolt pockets and through steel angles
- UV, acid and alkali resistant
- Resistant to high levels of impact and abrasion from road and highway traffic
- For gaps in floors up to 200mm wide with +/-165mm of movement
- Joint modules interlock with added sealant to ensure a water-tight joint
- Smooth transit for wheeled vehicles
- Standard colour is black
- Heavy-duty moulded joint ideal for use in bridges, parking decks, service areas and ports

OPTIONS

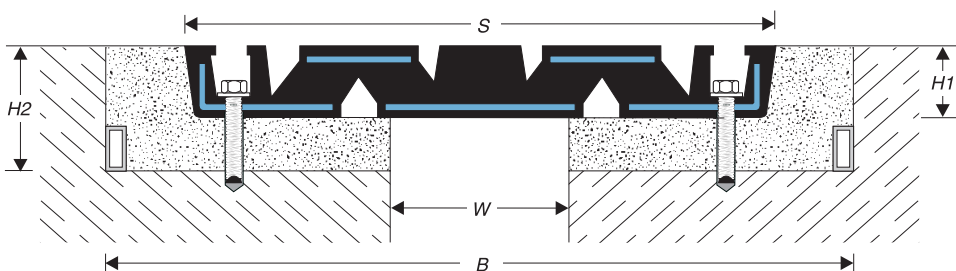
Fire Rated

Separate product and installation datasheet available

1300-A01-025



1300-A01-100



Application	Style	W Width mm	H1 Height mm	H2 Height mm	S Sightline mm	B Blockout mm	Movement ±		Load Rating kN
							Horizontal mm	Vertical mm	
Deck/Deck	1300-A01-025	25	35	55	240	300	19	2.5	600
	1300-A01-035	35	40	60	274	400	25	2.5	600
	1300-A01-040	40	46	66	356	400	32	2.5	600
	1300-A01-050	50	54	74	432	600	40	2.5	600
	1300-A01-075	75	54	74	590	750	51	2.5	600
	1300-A01-100	100	75	95	724	1000	83	2.5	600
	1300-A01-130	130	93	113	890	1200	115	2.5	600
	1300-A01-200	200	127	147	1207	1500	165	2.5	600

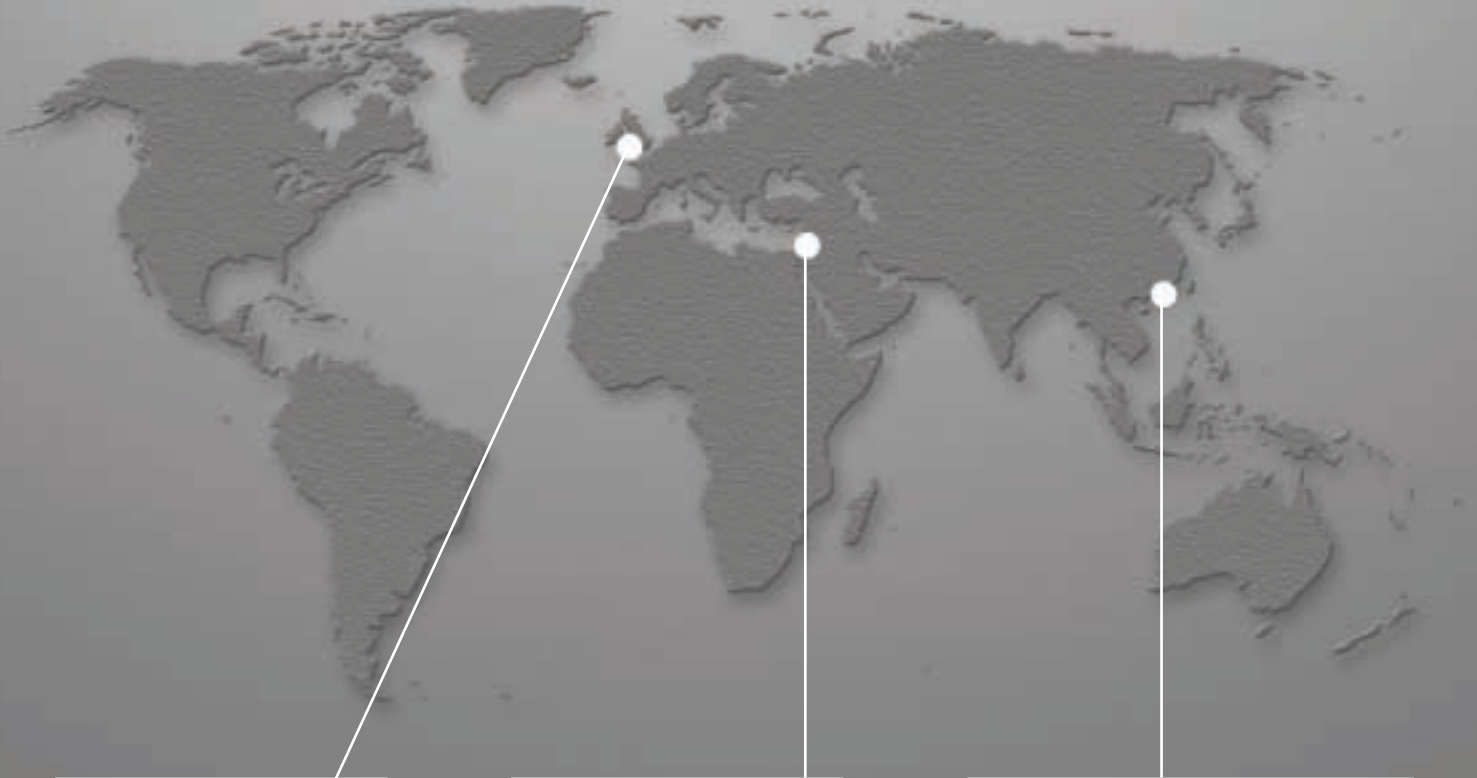
Vexcolt Around the Globe



Waterloo International Rail Terminal - London
Architect - Nicholas Grimshaw and Partners



VEXCOLT



Vexcolt Europe

Summer House,
Summer Way,
Exeter,
England EX4 8JD

Tel: ++44 (0)1392 467567
Fax: ++44 (0)1392 467705
e-mail: info@vexcolt.com

Vexcolt Middle East

Sabah Building,
Memari Street,
Beirut,
Lebanon

Tel: ++961 1 738725
Fax: ++961 1 738731
e-mail: info@vexcoltme.com

Vexcolt Asia

Room E,
7th Floor Gold King Industrial Building,
35-41 Tai Lin Pai Road,
Kwai Chung,
N.T. Hong Kong

Tel: ++852 2420 2380
Fax: ++852 2420 2396
e-mail: info@vexcoltasia.com



© Vexcolt 2002 Issue date: 06/02

Vexcolt reserves the right to revise designs and specifications without notice. Information given in this booklet is correct to the best of our knowledge, but architects and specifiers must satisfy themselves as to the suitability of any particular product, specification or design detail for a specific application.

Acknowledgement: We would like to thank Sir Norman Foster and Partners for supplying and allowing us to use a picture of Chep Lap Airport, Hong Kong for the cover of this booklet.